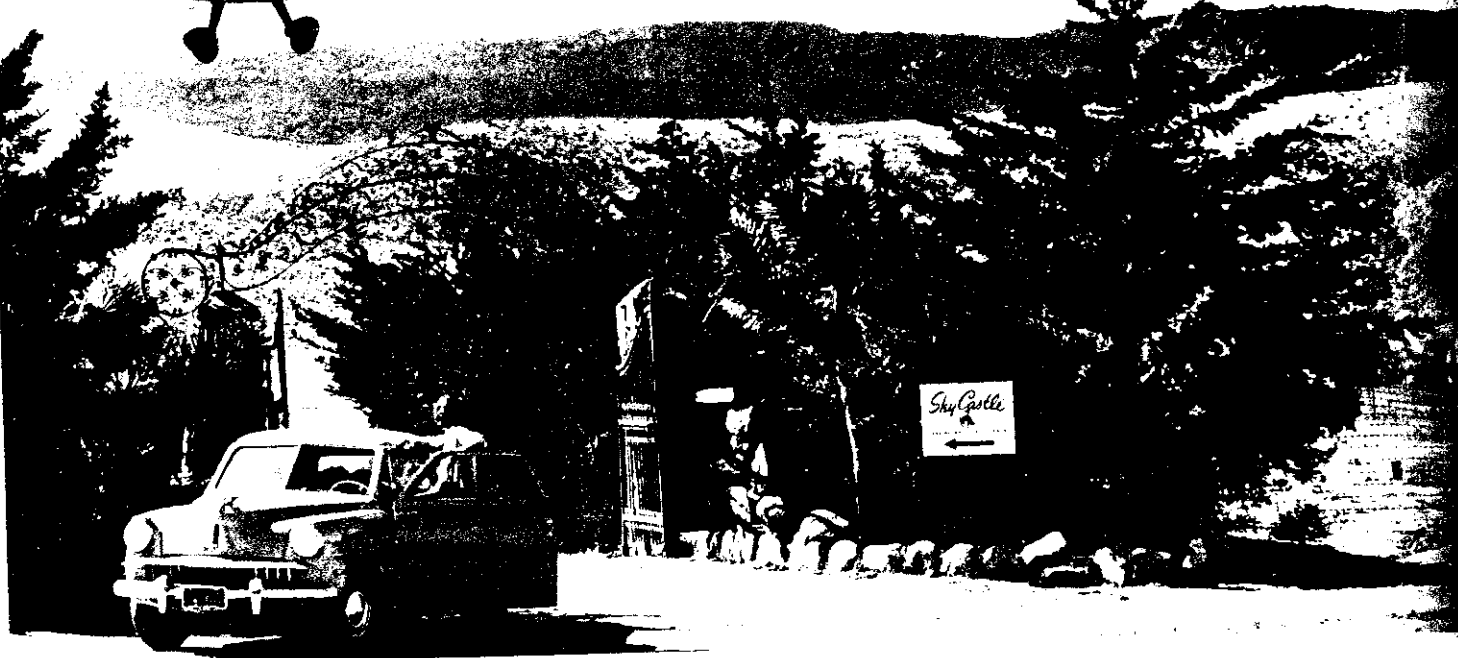
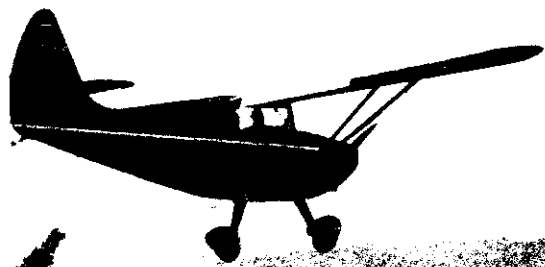


# Sky Castle

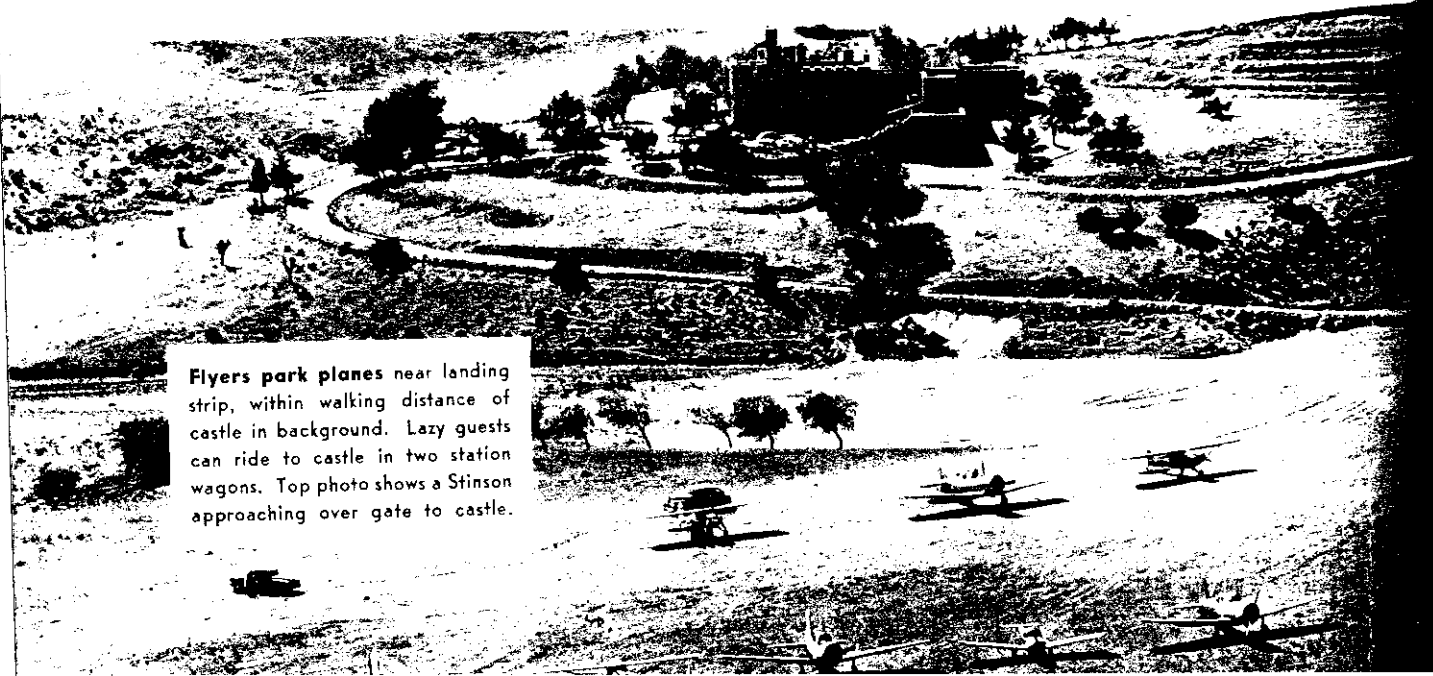


*It looks like a movie set but this \$400,000 castle is unique club for sportsmen flyers.*

PHOTOGRAPHS BY THE AUTHOR

By DON DOWNIE

**F**FIFTY AIRLINE MILES north of Los Angeles, a \$400,000 duplicate of a famed Irish castle is one of California's newest air resorts. Built in the twenties by a wealthy Hollywood realtor, the castle was recently turned into a flying resort by George Carter, now its business manager. A non-profit club with paid memberships (totalling nearly 300), it is open for both Sunday and weekday flights, with as many as 50 planes common for Sunday morning breakfasts. Cafe and bar remain open at all times, and the castle's 16 rooms furnish limited overnight facilities. By summer, motel units, tennis courts, a golf driving range and an artificial lake with sandy beach are to be completed. Sky Castle's 3,200-foot sod landing strip is 14 miles west of Lancaster and 2½ miles northeast of Lake Hughes. There is no landing fee, and gas and oil are available.



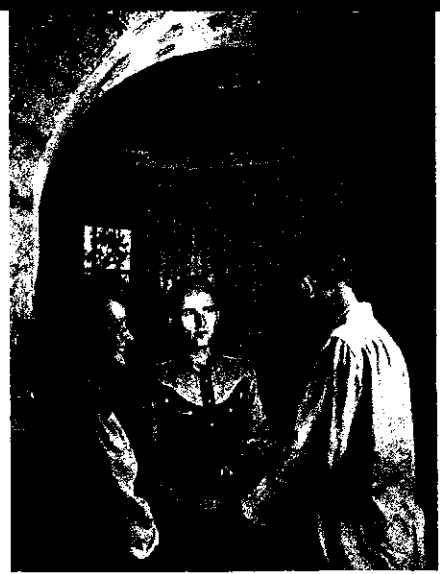
Flyers park planes near landing strip, within walking distance of castle in background. Lazy guests can ride to castle in two station wagons. Top photo shows a Stinson approaching over gate to castle.



**Sunday morning flyers** are met by a station wagon. Airstrip was built by leveling a pasture near the castle.



**Sky Castle welcome** is extended to Winston Key and daughter, Windie (left). They will spend the weekend.



**Checking in**, the Keys sign register for Manager George Carter. Castle was built by a Hollywood realtor.



**Lounge** was built on same scale as that of Irish castle. Details were duplicated: secret passage under stairway, fabulous crack (reproduction cost \$10,000) in door.



**Castle's guest rooms** are limited (only 16 now available) but 40 motel units will increase accommodations next summer. Windie Key snaps on light after she and father register at the resort.



**Bar** after a day of flying, horseback riding. Life kept on estate's 1,400 acres. Visitors can search for relics on old Indian camp site.



**Secret panel** in wall of castle is explored by Windie. Manager Carter guides her through passage.



**View of airfield** from archway in castle shows old reservoir (foreground) where lake is planned.